

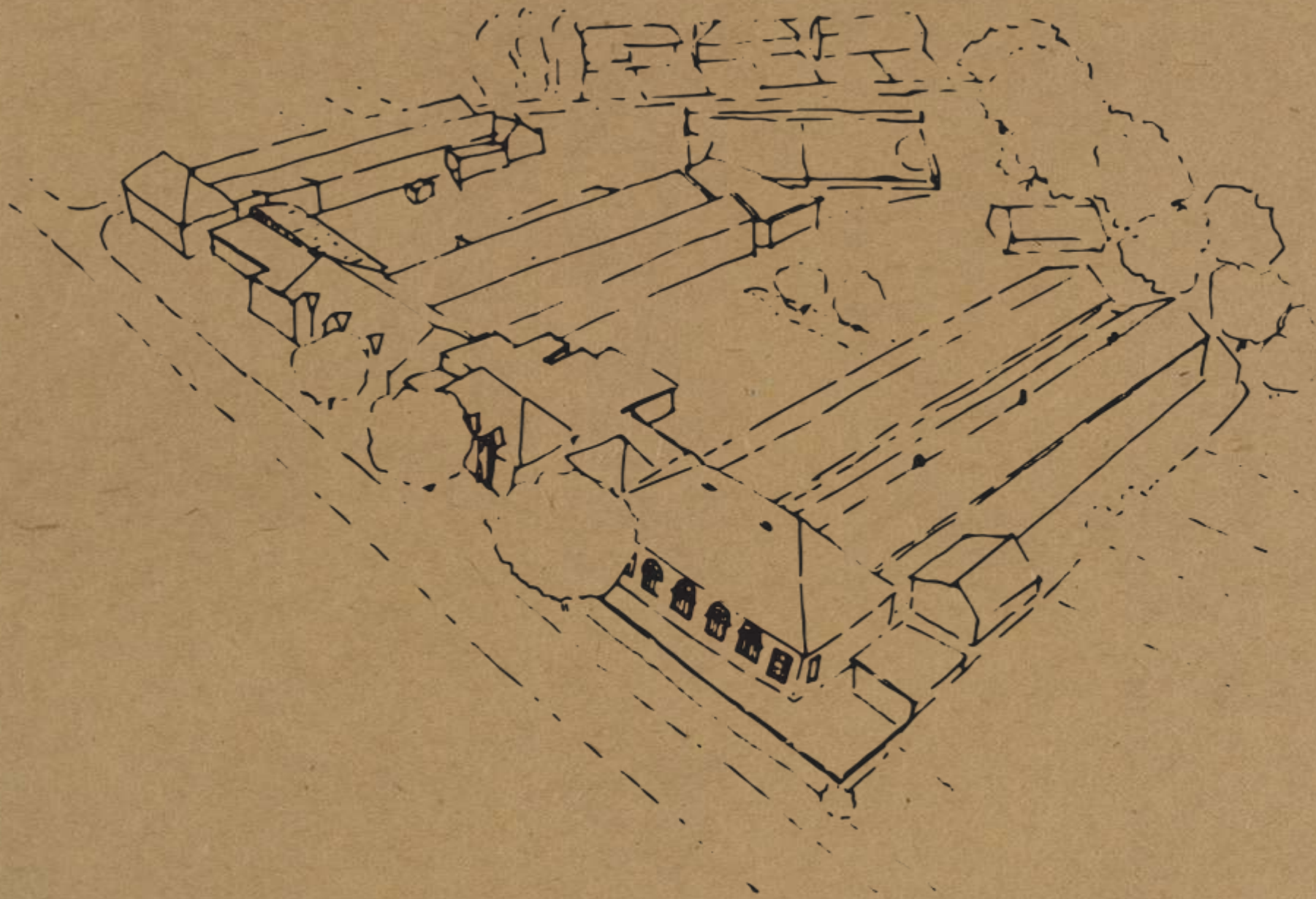
STRIDE TREGLOWN

ELMFIELD (PRIMARY)

SCHOOL FOR DEAF CHILDREN

MEETING 02

19.12.19



WHAT WE LEARNT – LAST MEETING

PRIMARY

1. A mix of Option 2– ‘Garden Play’ and Option 3b – ‘Heart Space’ was preferred.
2. New build dual entrance link building with greater street presence and views through to courtyard. Staff and students arriving by car/taxi to enter the reception from play area side of building. Students will all congregate in the school hall at the beginning of the day.
3. Office and reception adjacent to main entrance.
4. All classrooms facing onto the courtyard play area with direct external access. All classroom associated storage to be accessed from within the classrooms to maximise room size.
5. 2no quiet calm rooms to be included. One at either end of the building. Non wire rooms.
6. Covered canopy to the south for solar shading and rain cover along route to rear reception entrance.
7. 2 separate play areas – ‘Secret garden’ (north) and ‘Learning landscape’ (south).
8. Early years in new link building adjacent to family centre and main entrance with access to play area. (Potential connection with UHS early years play?)
9. Early years classrooms to be combined with space for 12 students and assessment room adjacent for parent / therapy observations.
10. Family centre at the front of the building for street prominence.
11. Kitchen adjacent to hall for dining.
12. Central ‘Boat Space’ made up from a mix of rooms / storage allocation to open up the central corridor and create an interesting journey/play experience through the building.

WHAT WE LEARNT – LAST MEETING

PRIMARY

13. Existing toilet block arrangement is not ideal and options to integrate WC's near to classrooms to be reviewed.
Options to remove toilet block part of building and rebuild new facility to be reviewed as part of security, carpark and play area strategy.
14. Supplementary area added to the schedule of accommodation to include Nurture Base, Nurture Group Room and Rebound Therapy. Nurture facility to provide space for 5/6 children with specific sensory needs that otherwise would need to be moved to other schools or out of the county. Space to be similar to 'The Keep' (Skanska)



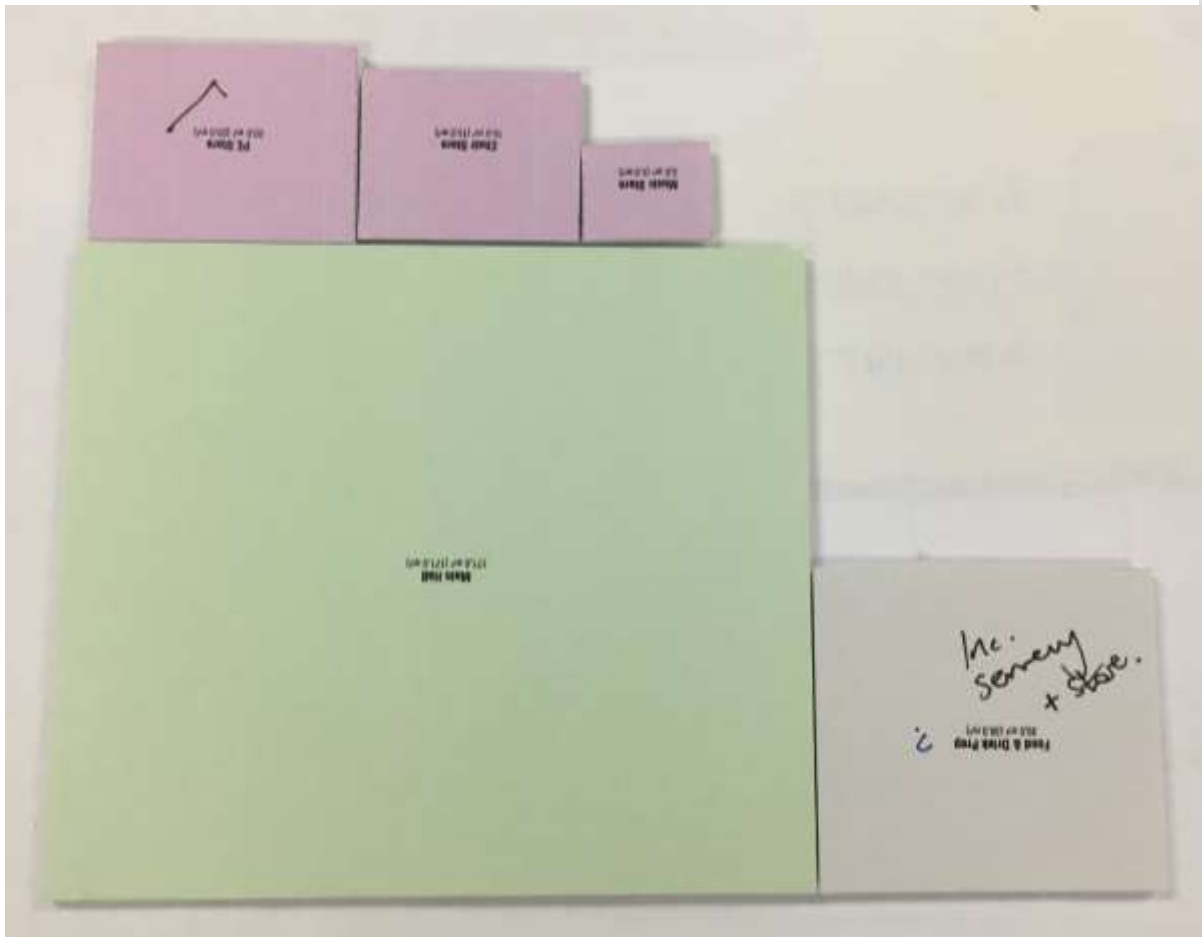
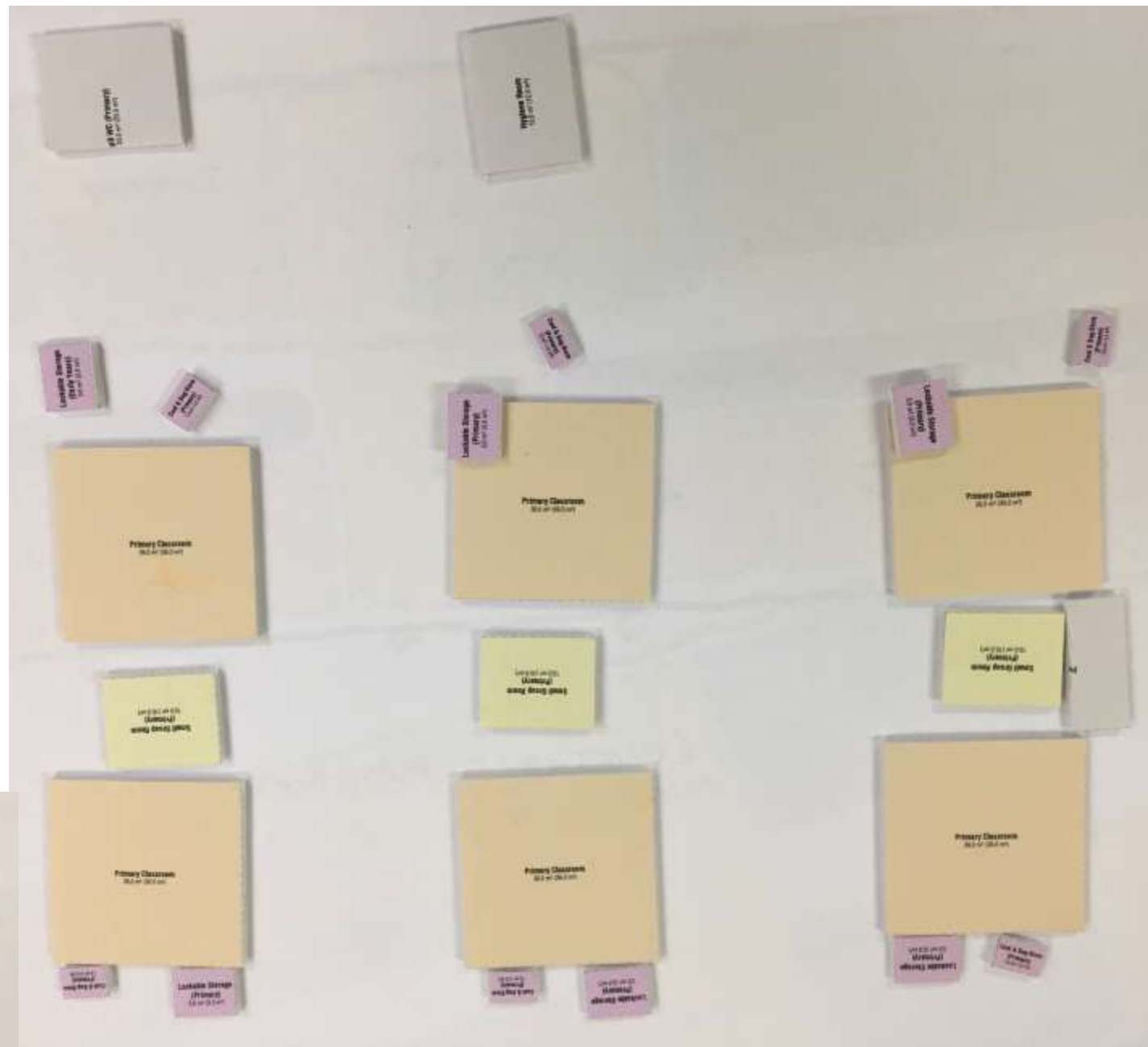
Option 2 – Garden Play
(meeting 01)

ADJACENCIES

PREFERRED ADJACENCIES

Classrooms

- Group room and hygiene room one per two classrooms. Classrooms to include coat storage and lockable storage within the classroom area.



Hall/dining

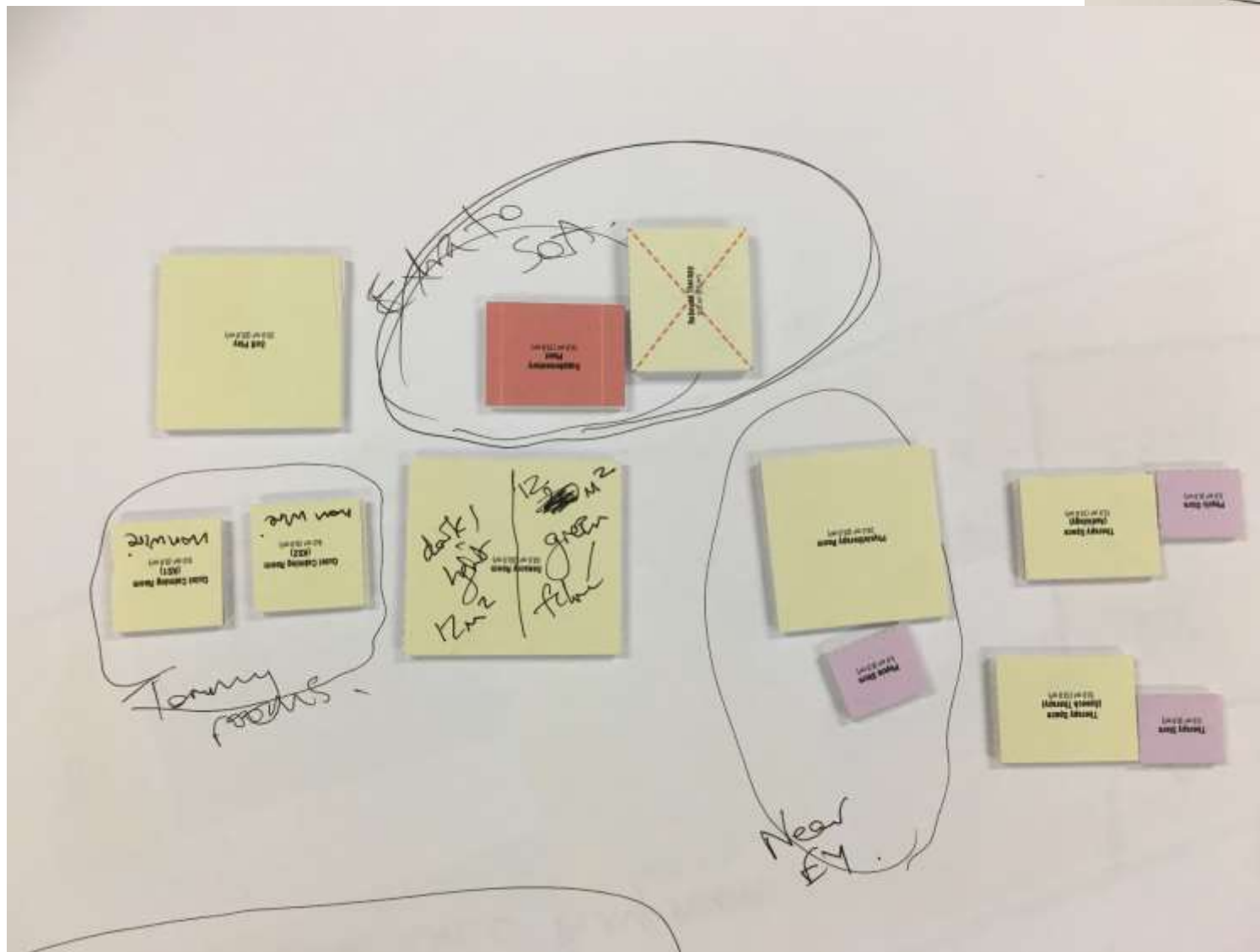
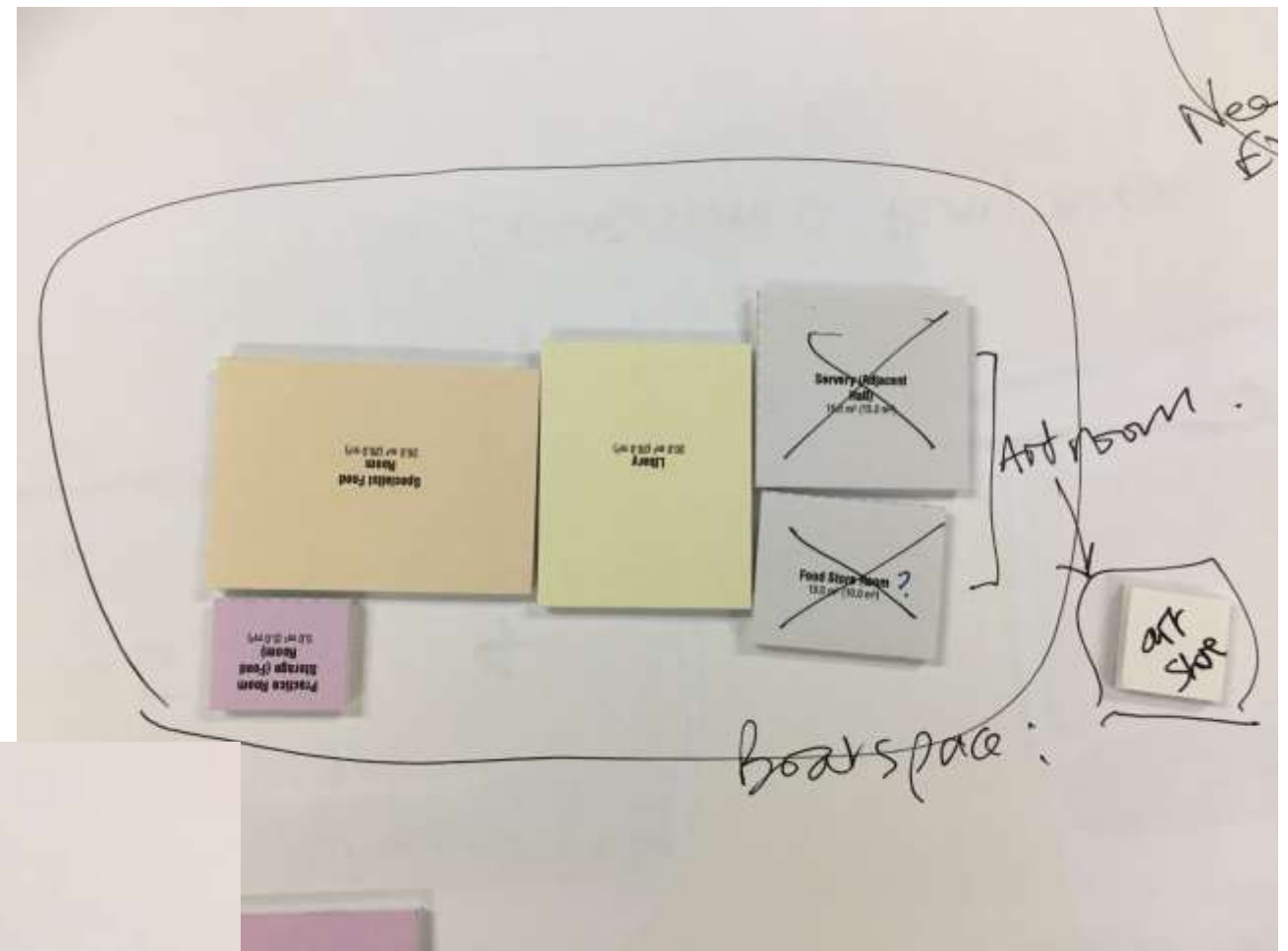
- Food prep to include servery and store and be adjacent to the hall.

ADJACENCIES

PREFERRED ADJACENCIES

Boat Space

- Boat space to be created from specialist food room / life skills, art room, library, practical room storage – food room, art room store and mobility equipment store.

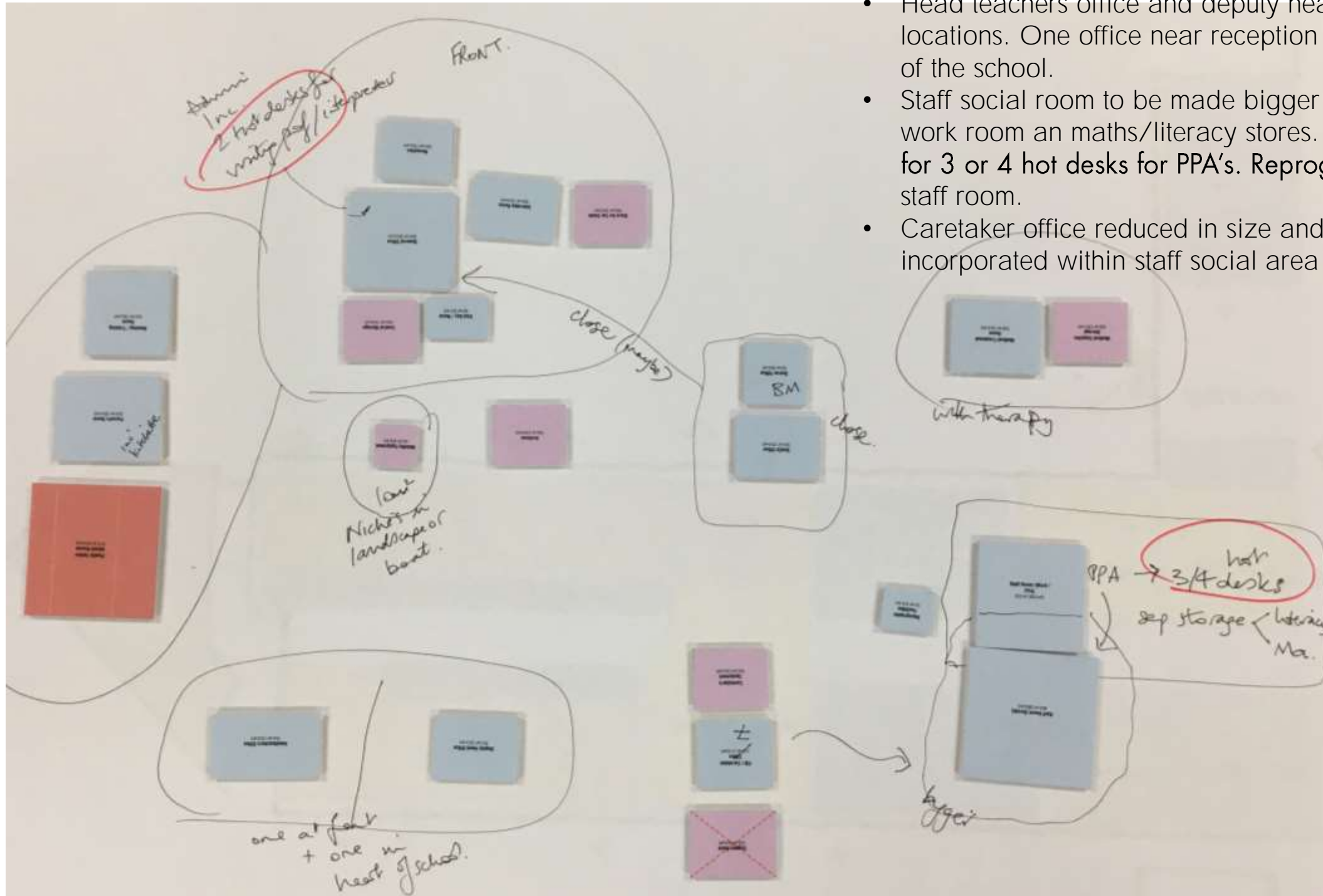


Learning Resource

- Inclusion of 2no calm, quiet rooms 1no at either end of the building.
- Physiotherapy room and store adjacent to early years.
- Sensory room area split into two rooms, dark/light room and a green/filming room.
- Medical treatment room and store adjacent to therapy rooms.

ADJACENCIES

PREFERRED ADJACENCIES



Learning Resource

- Reception area formed of reception, general office, office store, sick bay, interview room and car seat store.
- General office for admin at the front of the building incl. two hot desks for visiting professionals and interpreters.
- Business manager and SENCO office close to reception.
- Parents room, family centre and meeting room adjacent to reception. Parents room to include a kitchenette.
- Head teachers office and deputy heads office in different locations. One office near reception the other in the heart of the school.
- Staff social room to be made bigger incorporating the staff work room and maths/literacy stores. Staff work room sized for 3 or 4 hot desks for PPA's. Reprographics adjacent to staff room.
- Caretaker office reduced in size and remaining area incorporated within staff social area allowance.

DEVELOPED IDEAS

1.Landscape and parking

2.Plan

3.Boat Space

PARKING

Bristol Local Plan – Site Allocations and Development Management Policies – Adopted July 2014

D1 – Non-residential Institutions		
Vehicle Type	Standard	
Cycles	<p>Staff/children/students:</p> <p>Clinics/Dentist – one space per five staff</p> <p>Nursery/Creche/Childrens Centre – one space per five staff and buggy storage</p> <p>Primary school – one space per five staff, one space per 10 children and scooter storage</p> <p>Secondary School/6th Form Colleges/ CFE's – one space per five staff and one space per five students</p>	<p>Visitors:</p> <p>Clinics/Dentist – one space per 2 consulting rooms</p> <p>Nursery/Creche/Childrens Centre – one space per 10 children</p> <p>Primary school – one space per 100 children</p> <p>Secondary School/6th Form Colleges/ CFE's – one space per 100 students</p> <p>Places of worship/Community Halls/ Youth Clubs/Libraries/other Cultural centres – one space per 100m²</p>
Disabled people	<p>Staff:</p> <p>From a threshold of 500 m², 3% of the parking standard to be provided in addition – minimum of one space</p>	<p>Visitor:</p> <p>5% of capacity to be reserved for disabled people (minimum of one space) where form of development permits</p>
Service Vehicles	<p>All developments will be expected to demonstrate how servicing will be undertaken and provide adequate facilities for coaches.</p>	
Car parking	<p>Staff:</p> <p>Medical/health centre – one space per duty doctor/nurse/other medical and one space per two admin/clerical staff</p> <p>Schools – one space per two F/T staff</p> <p>Colleges/University/other training centres – one per two duty staff</p>	<p>Visitor:</p> <p>Medical/health centre – three spaces per consulting room</p> <p>Schools – 10% of the staff parking standard, in addition</p> <p>Colleges/University/other training centres – one per 15 students</p> <p>Community halls/Places of Worship/ Church halls – one space per 20 m²</p> <p>Libraries – one space per 100 m²</p>

38FTE = 19 Staff Spaces (1 Accessible space)

Visitors = 2 Spaces (10%) (1 Accessible spaces)

+ Medical Professionals = ?

+ cycles

ACCESS OPTIONS

Requirement

38FTE = 19 Staff Spaces (1 Accessible space)

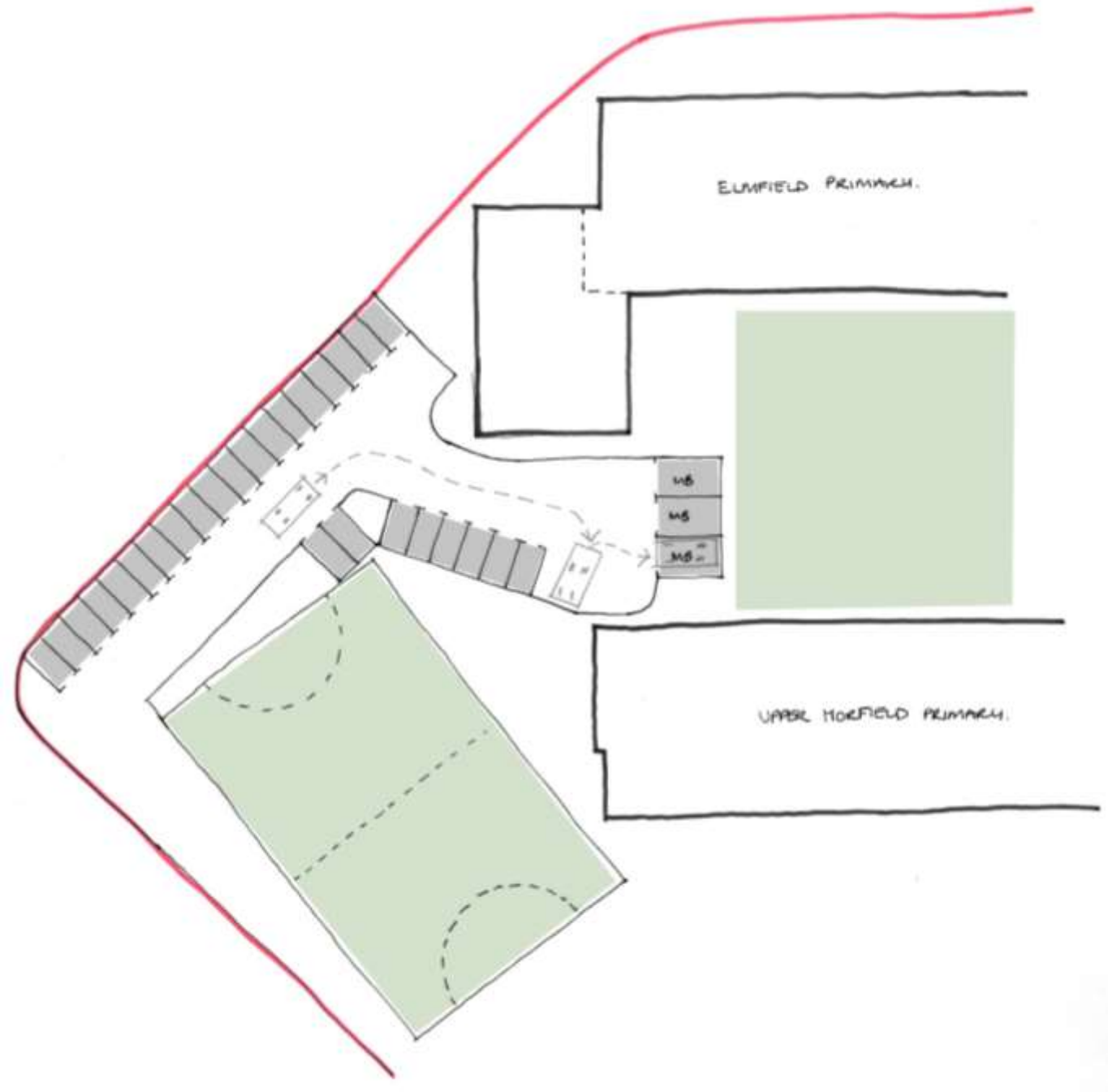
Visitors = 2 Spaces (10%) (1 Accessible spaces)

+ Medical Professionals = ?

+ cycles

Proposal

- x 3 Mini Bus Spaces
- x 29 Standard Parking Spaces



ACCESS OPTIONS

Requirement

38FTE = 19 Staff Spaces (1 Accessible space)

Visitors = 2 Spaces (10%) (1 Accessible spaces)

+ Medical Professionals = ?

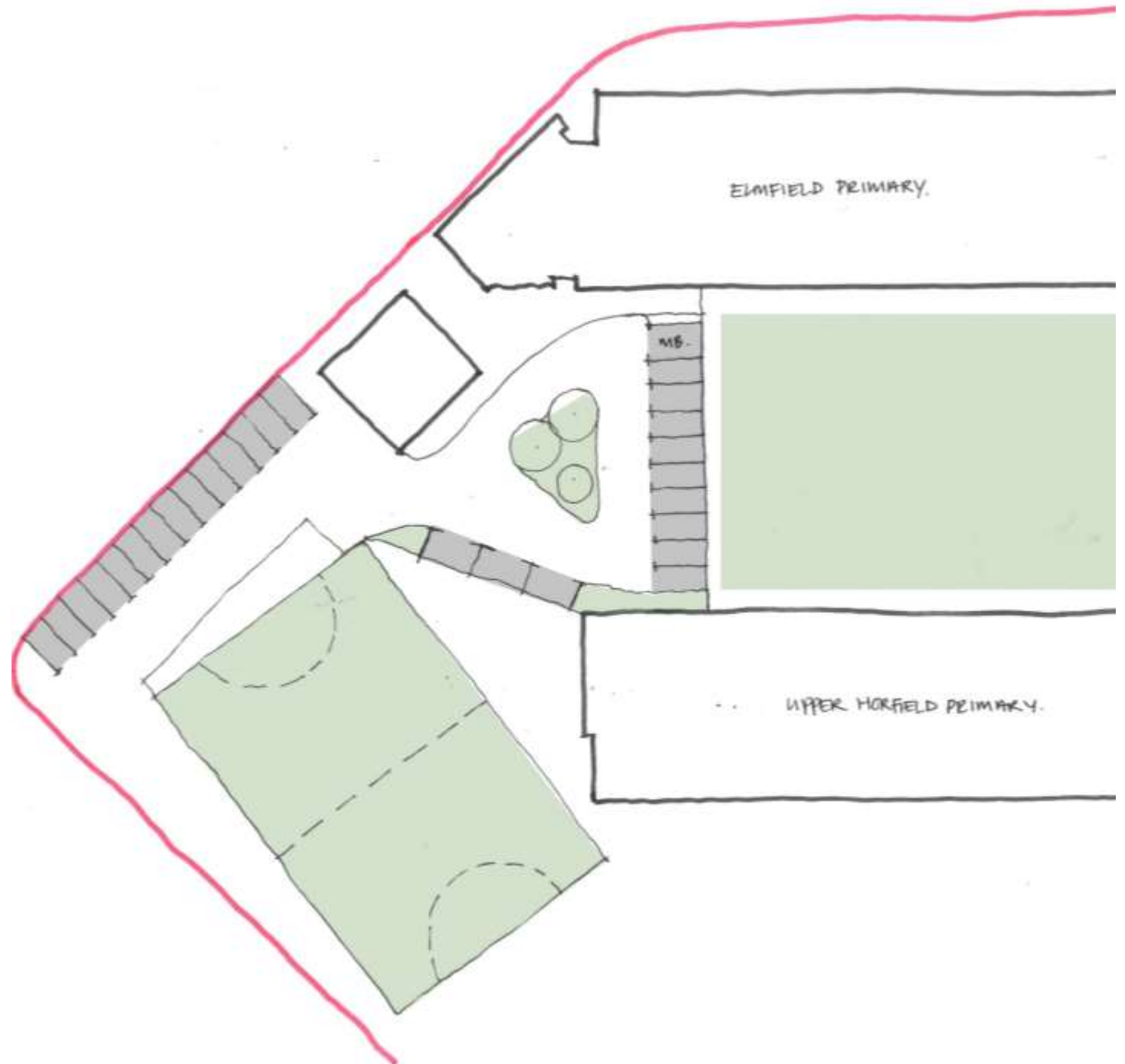
+ cycles

Proposal

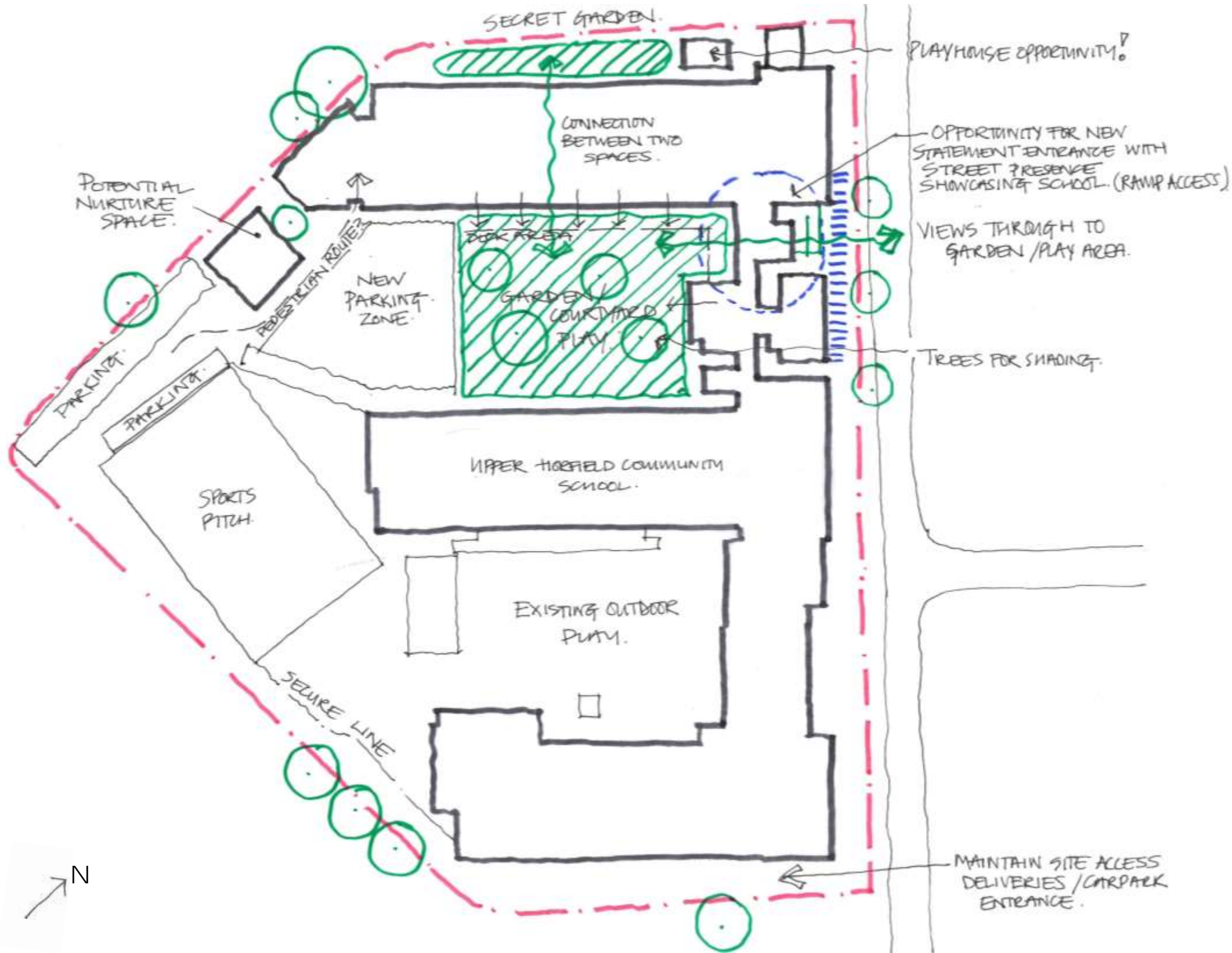
- x 1 Mini Bus Spaces
- x 26 Standard Parking Spaces

Or

- x 3 Mini Bus Spaces
- x 22 Standard Parking Spaces



SITE OPPORTUNITIES



EXTERNAL LEARNING LANDSCAPE

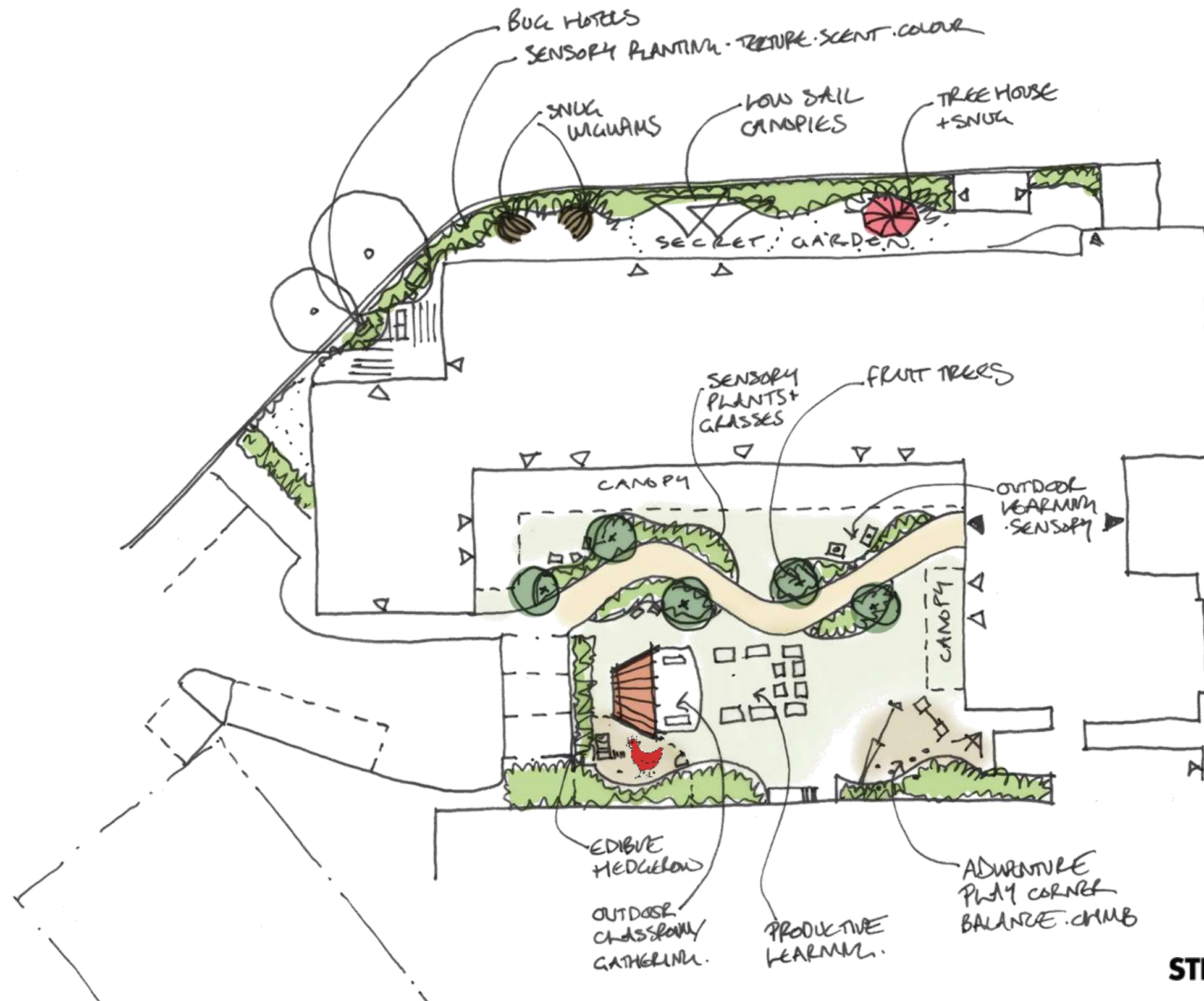


Edible school yard
Forest School
Learning landscape
Sensory



STRIDE TREGLOWN

EXTERNAL LEARNING LANDSCAPE

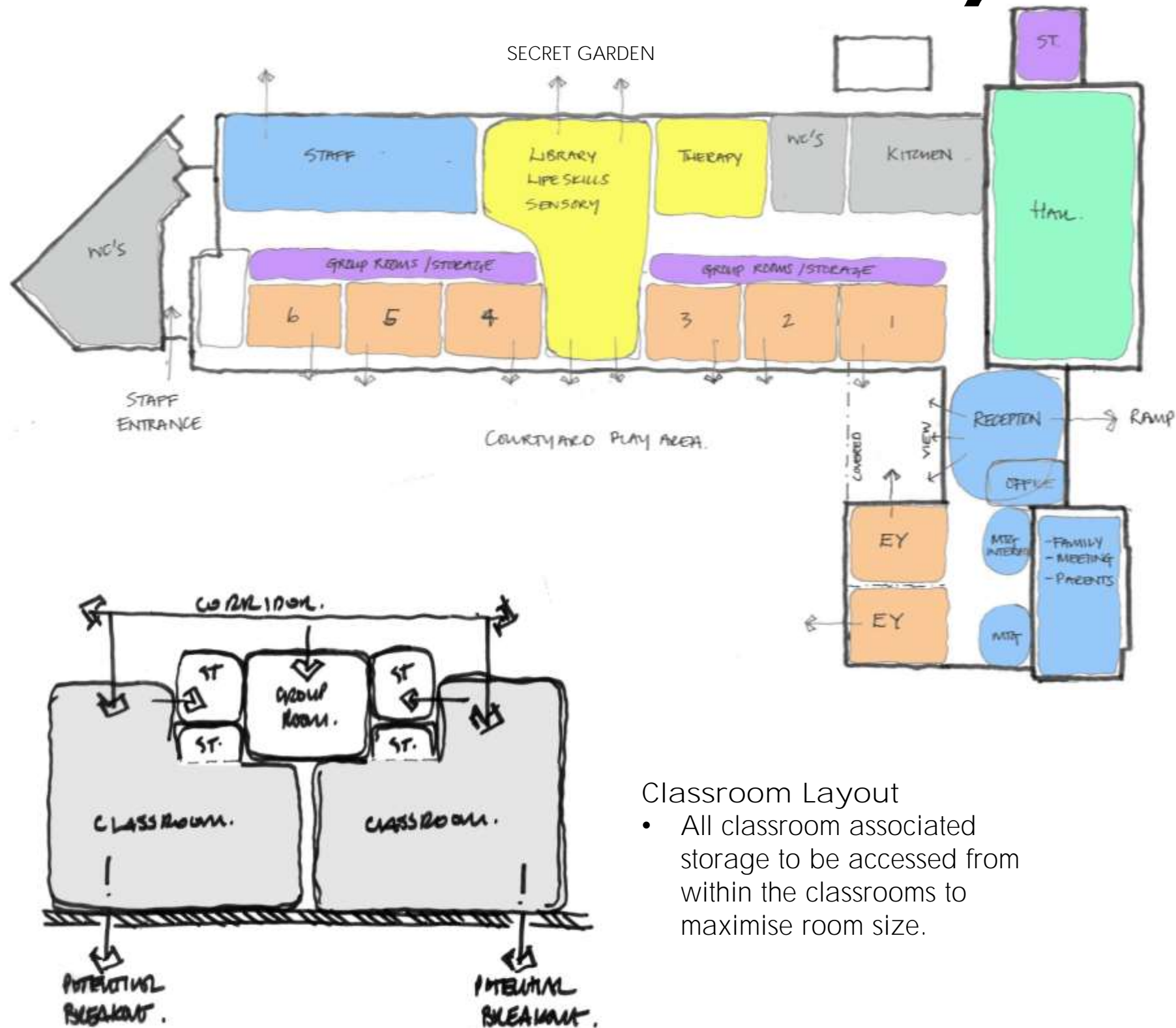


EXTERNAL LEARNING LANDSCAPE



STRIDE TREGLOWN

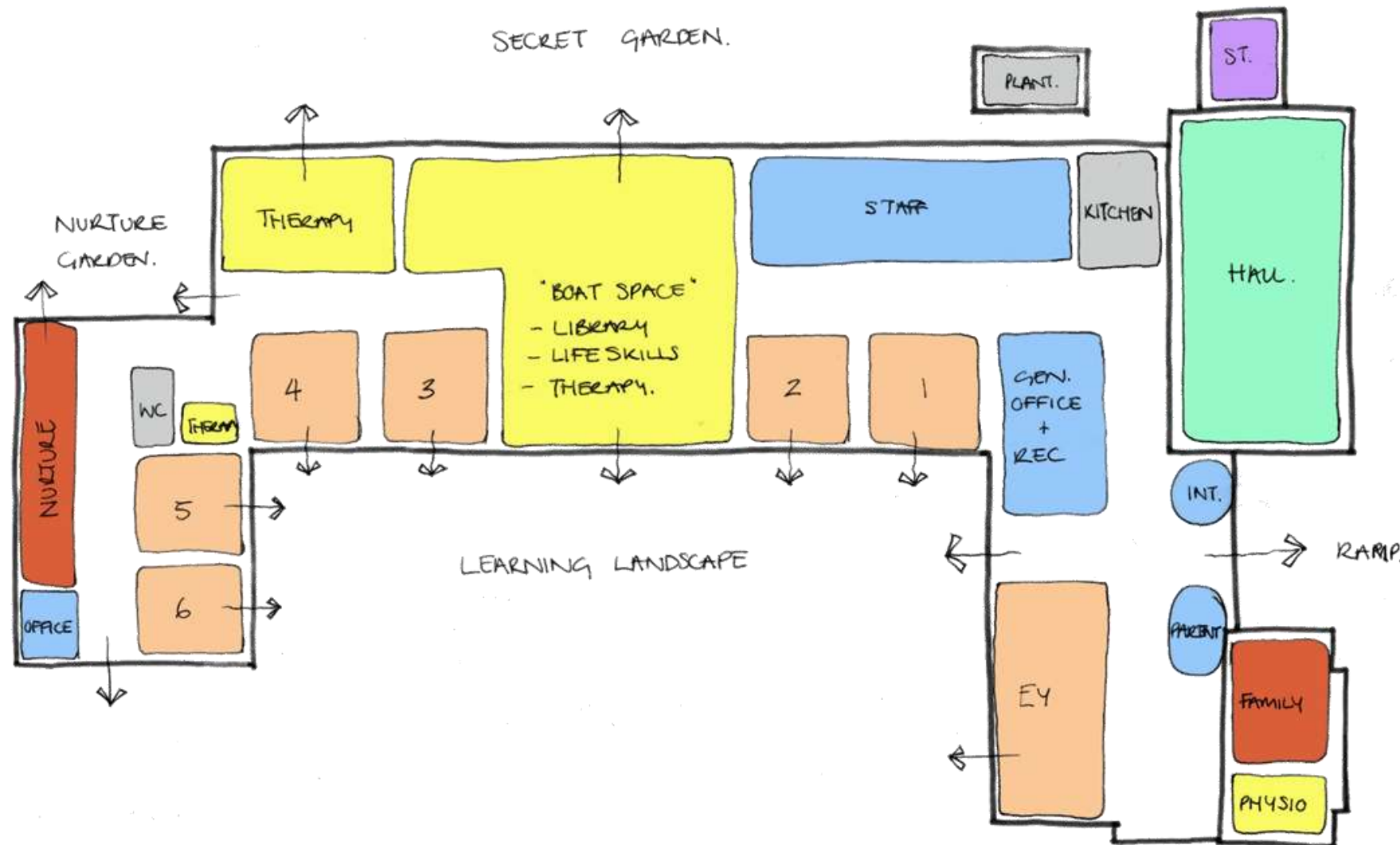
OPTION 02 – 'Garden Play'



Classroom Layout

- All classroom associated storage to be accessed from within the classrooms to maximise room size.

OPTION 02a - DEVELOPED

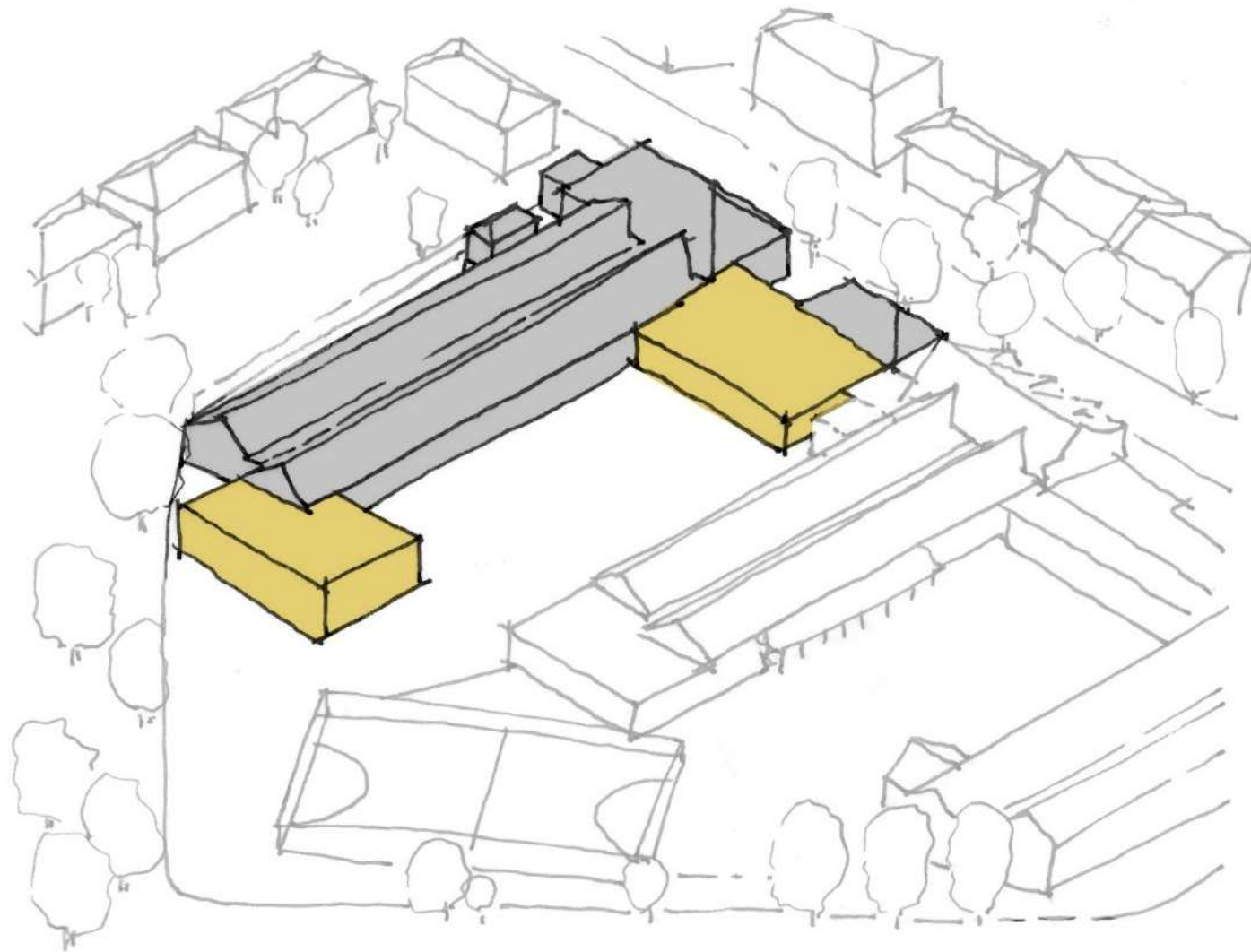


- New build reception entrance link building and new build block to the west to enclose the courtyard garden.
- Demolition of the existing entrance, existing toilet block and separate resource building.
- 2 staff areas closely linked to reception and boat space.
- All classrooms surrounding and facing onto courtyard play area with direct external access.
- 2 separate play areas – 'Secret garden' (north) and 'Learning landscape' (south) linked by the central boat space.
- Central 'Boat Space' created from library, life skills and therapy spaces.
- Smaller kitchen adjacent to hall for dining.

OPTION 02a - DEVELOPED

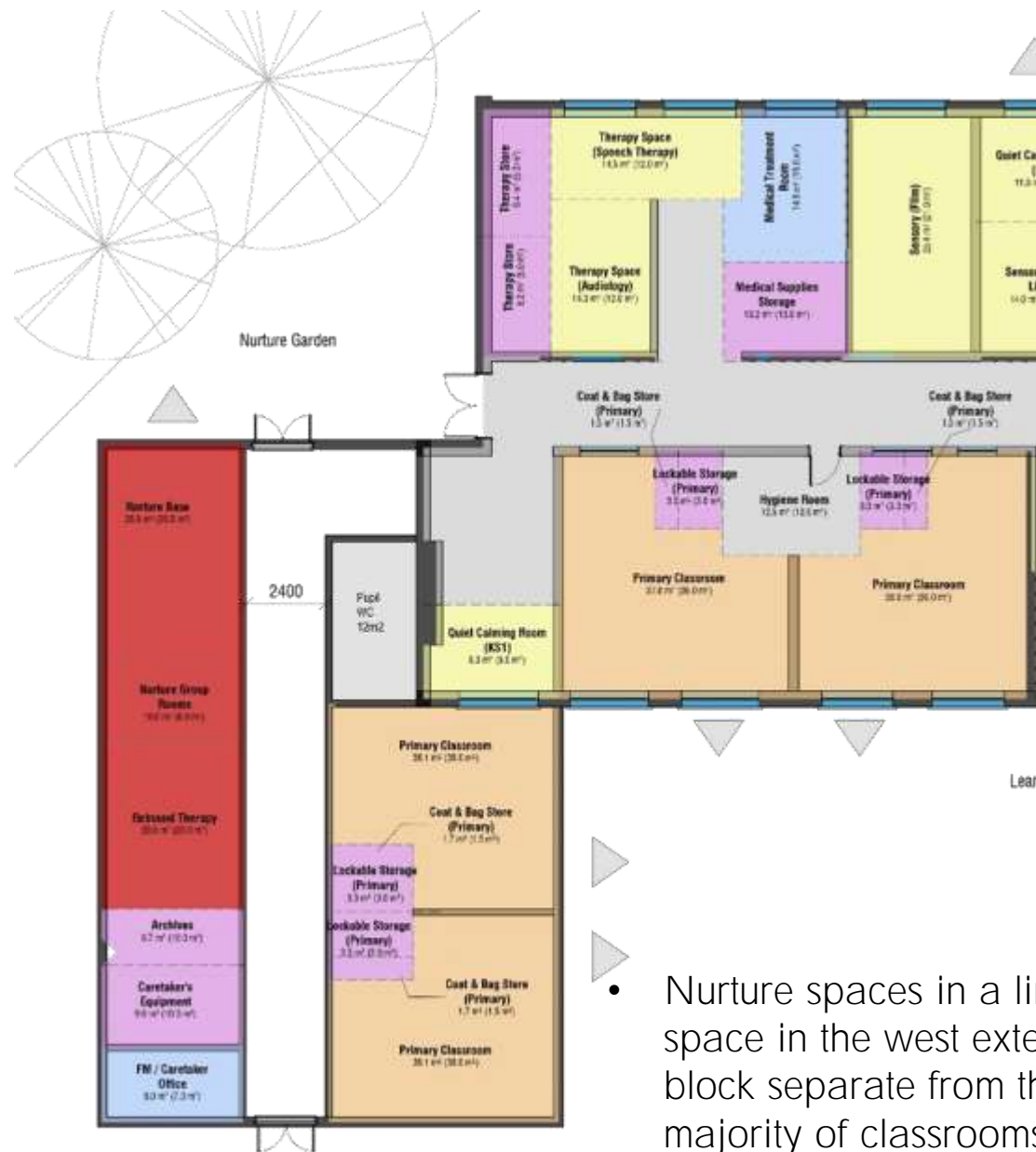


OPTION 02a - DEVELOPED

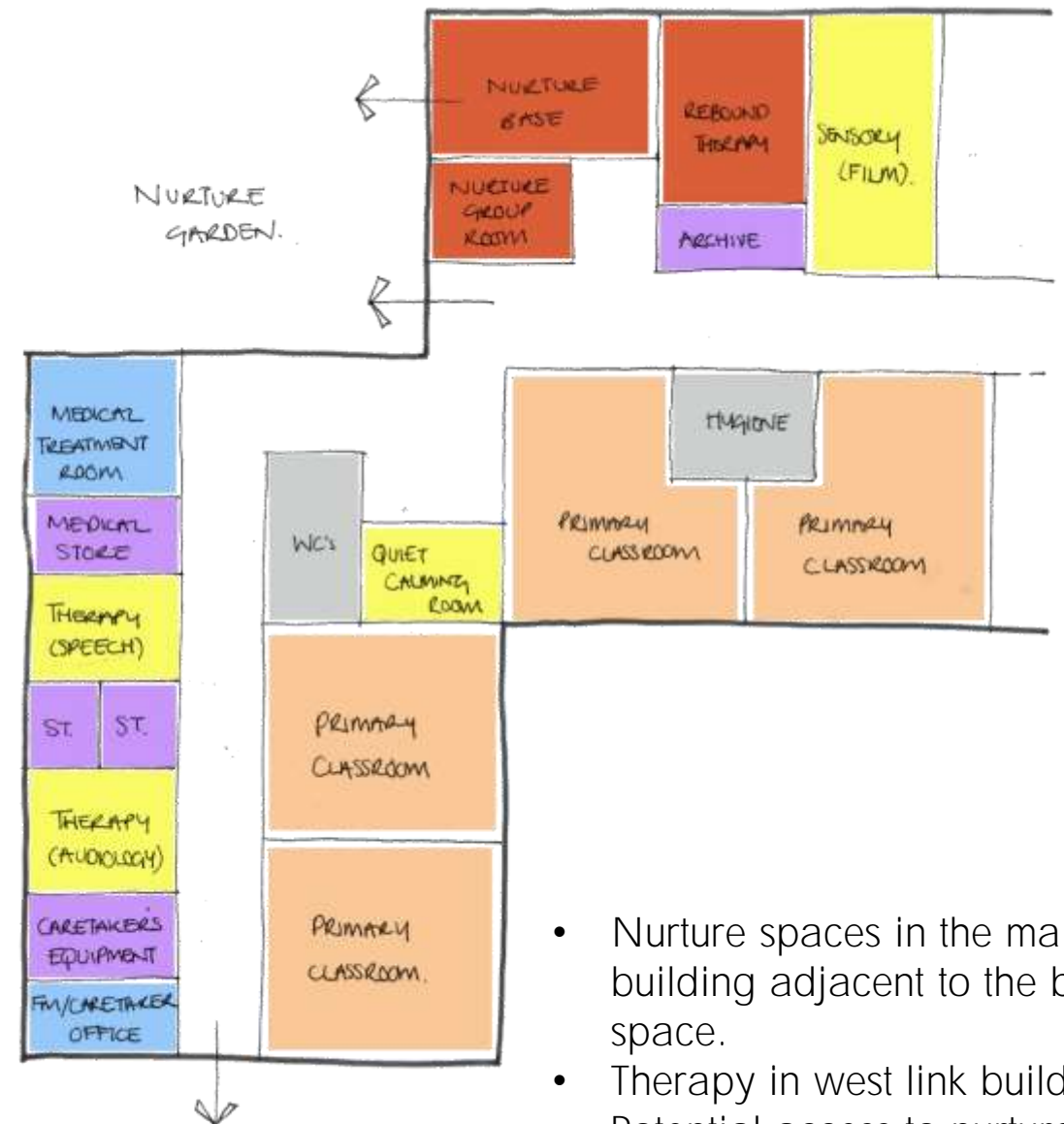


STRIDE TREGLOWN

OPTION 02a – THERAPY / NUTURE

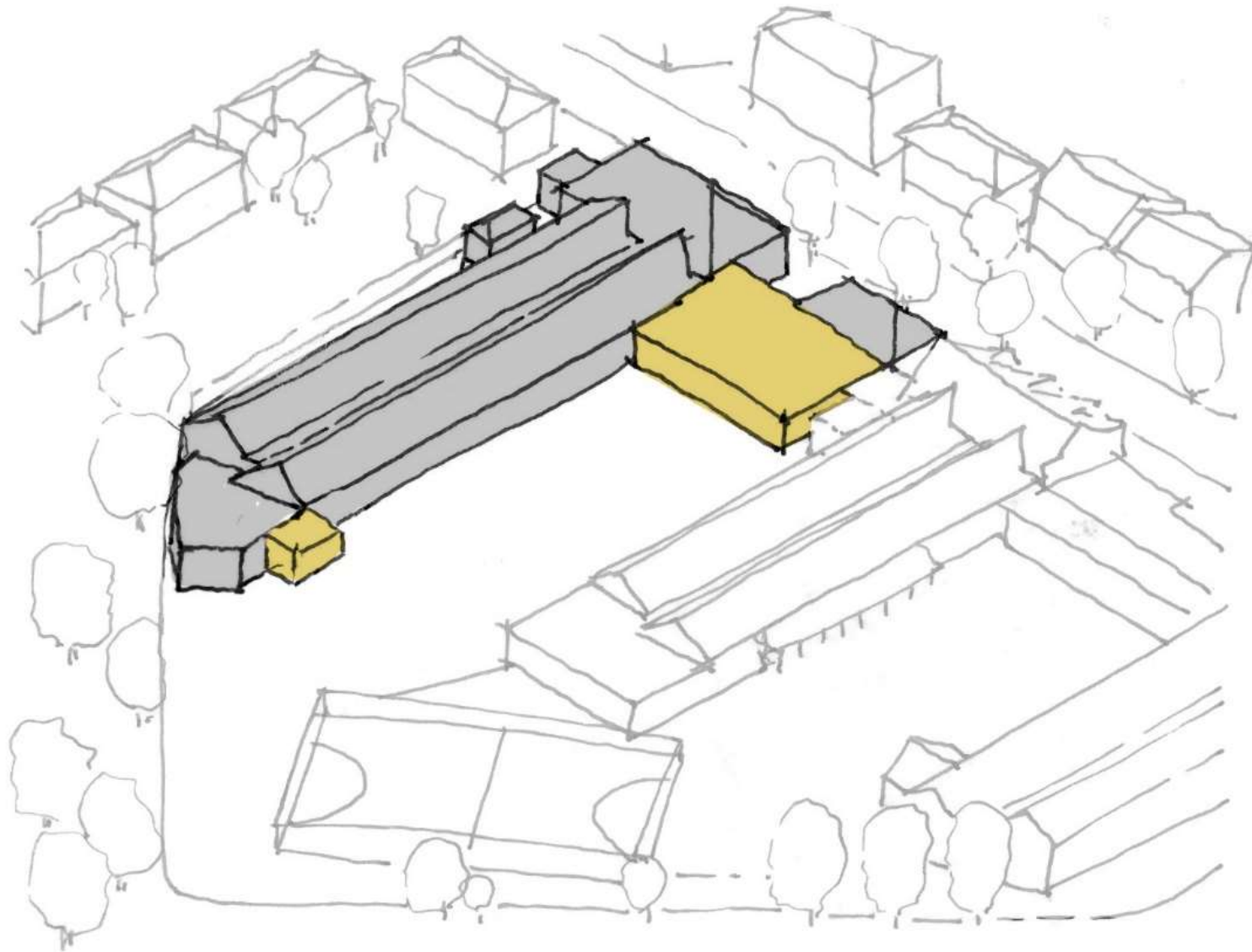


- Nurture spaces in a linear space in the west extension block separate from the majority of classrooms.
- Therapy adjacent to boat space.
- Potential access to nurture garden.



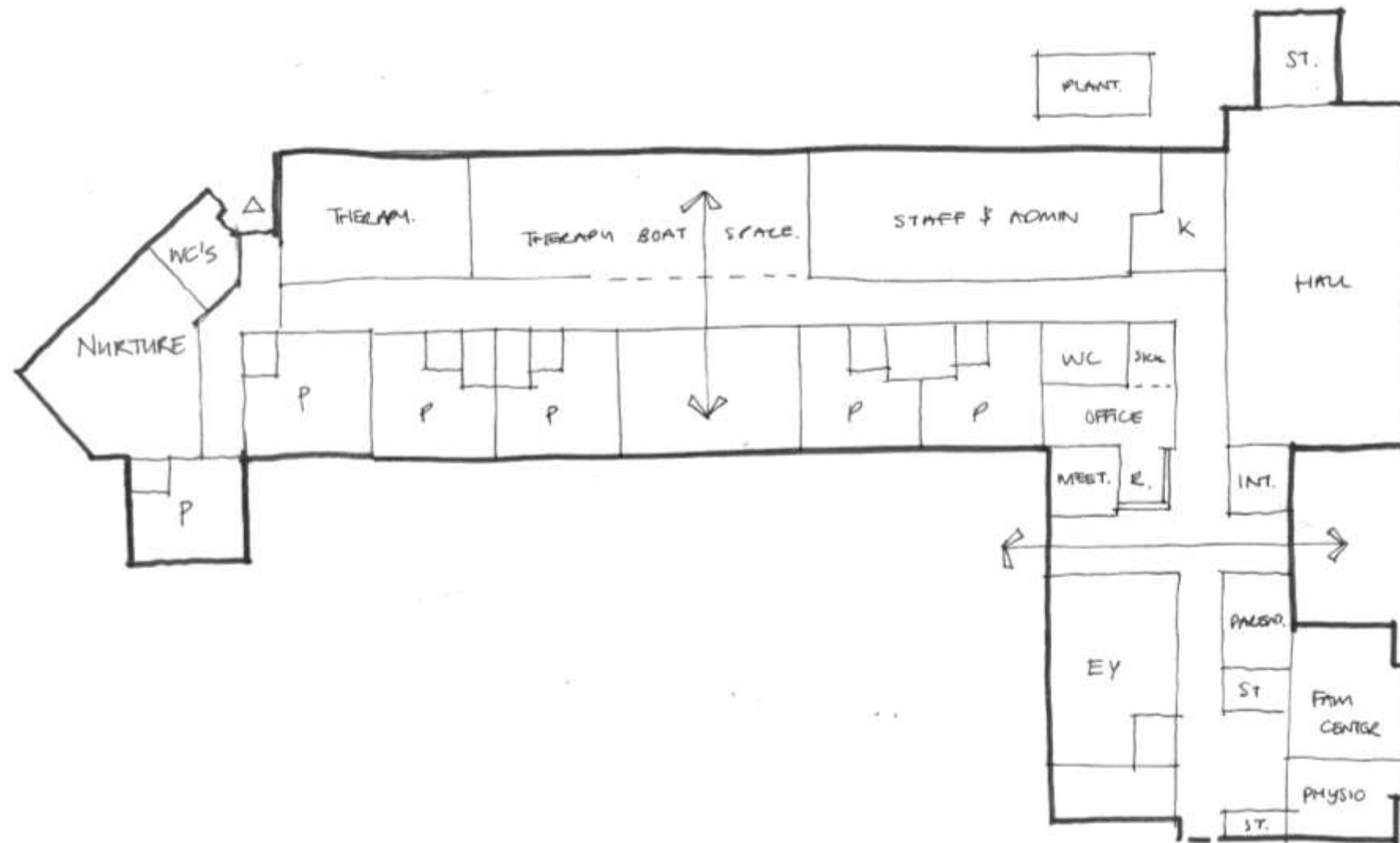
- Nurture spaces in the main building adjacent to the boat space.
- Therapy in west link building.
- Potential access to nurture garden.

OPTION 2b



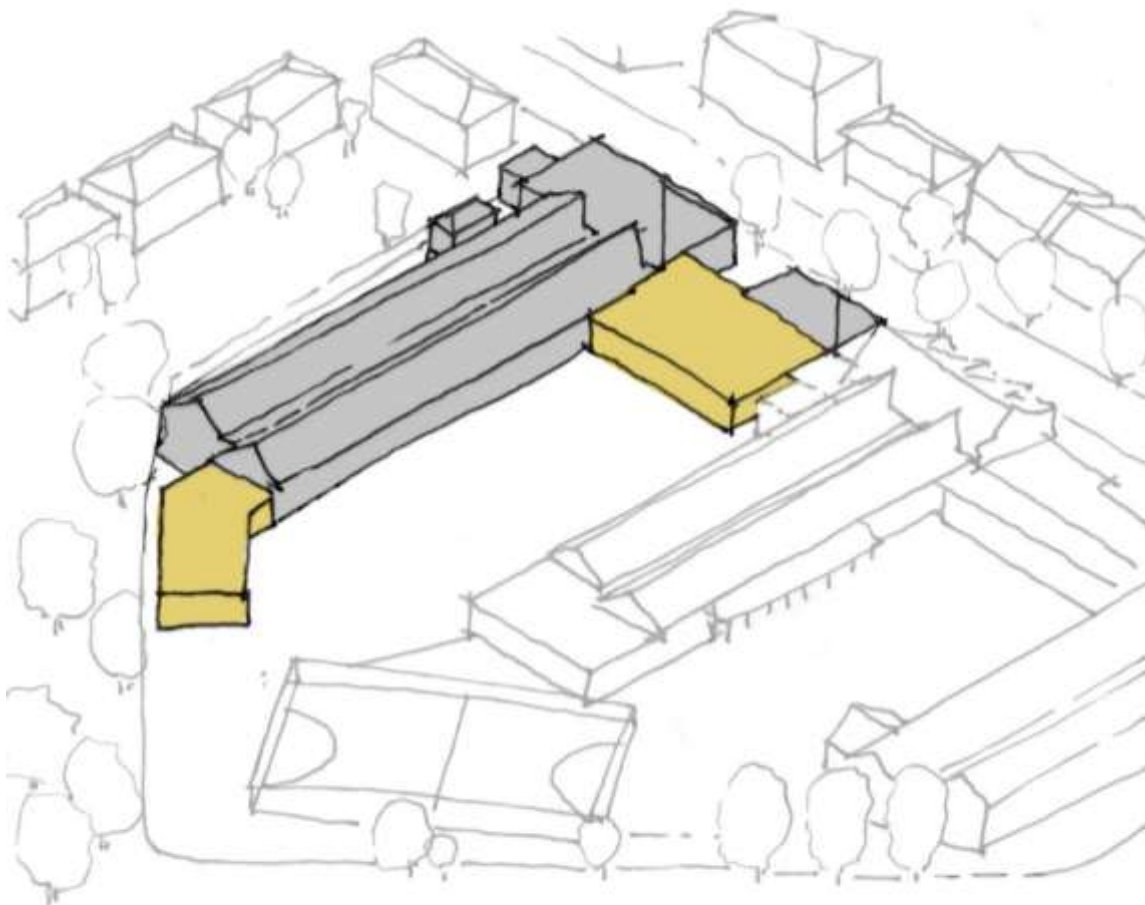
STRIDE TREGLOWN

OPTION 2b



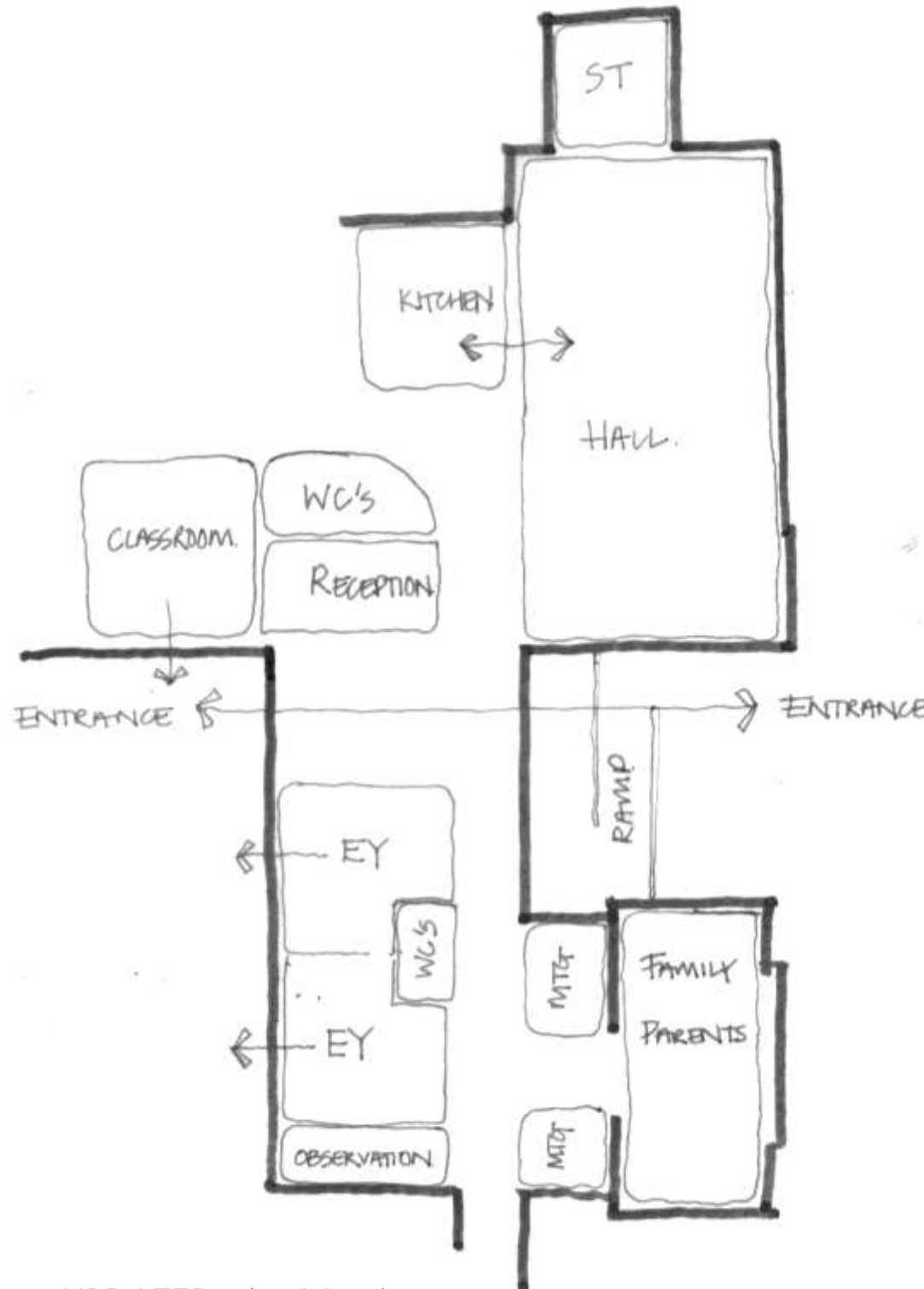
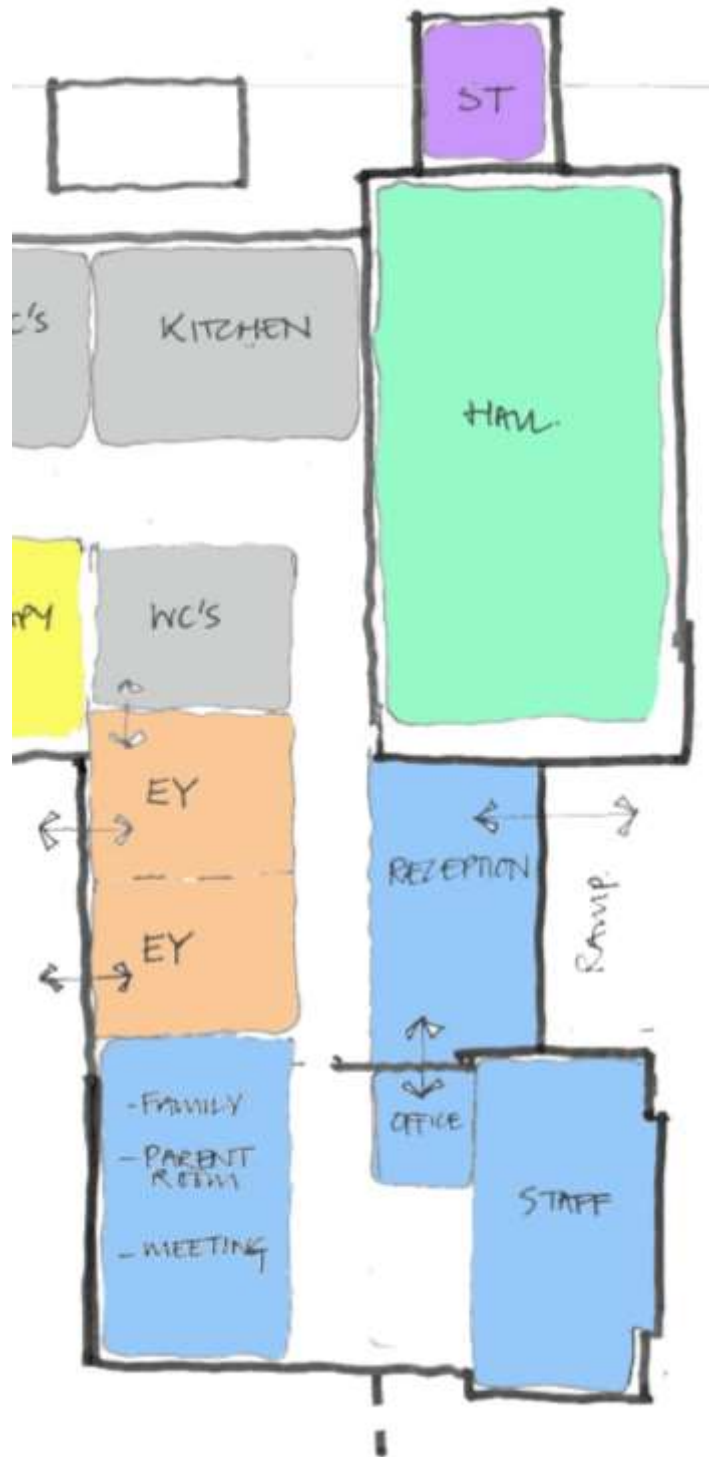
- New build reception entrance link building
- Retention of existing WC block and utilised for nurture space.
- Demolition of separate resource building.
- One classroom separate from other primary classrooms?
- Issues with existing WC block?

OPTION 2c



- New build reception entrance link building
- Demolition of WC and resource block.
- New building following existing site boundary.
- Linear single sided corridor?
- Linear nature of building and student experience?

ENTRANCE

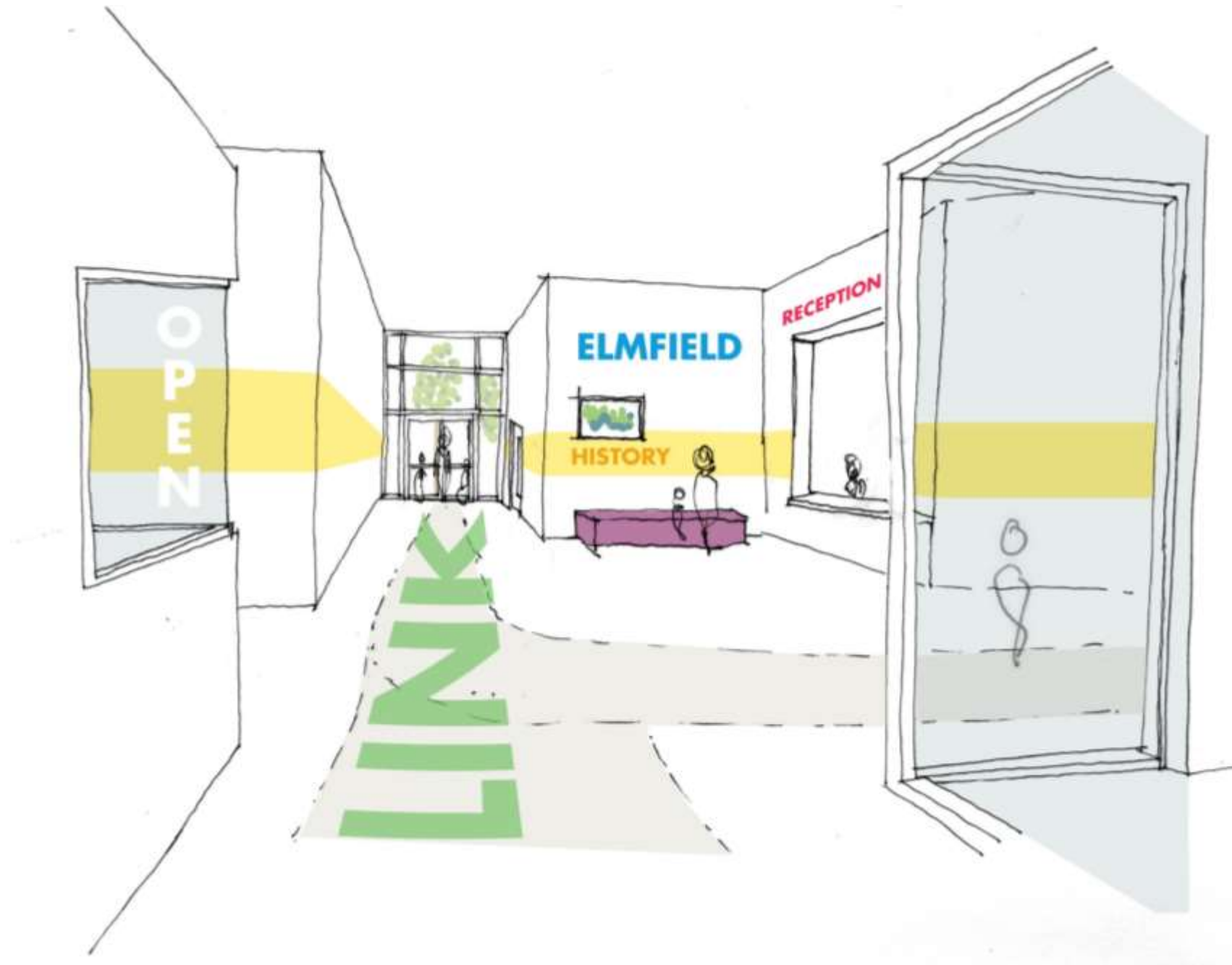


- New entrance with greater street presence and views through to courtyard.
- Dual sided entrance from street and play area to allow students to congregate in the hall at the beginning of the day.
- Office and reception adjacent to main entrance.
- Early years in new link adjacent to family centre and main entrance with access to play area. (Potential connection with UHS early years play?)
- Early years classroom combined with space for 12 students.
- Assessment room adjacent to early years classrooms for parent / therapy observations.
- Family centre at the front of the building for street prominence.
- Connection to mainstream school?

OPTION 3b - Meeting 01

UPDATED 3b - Meeting 01

ENTRANCE

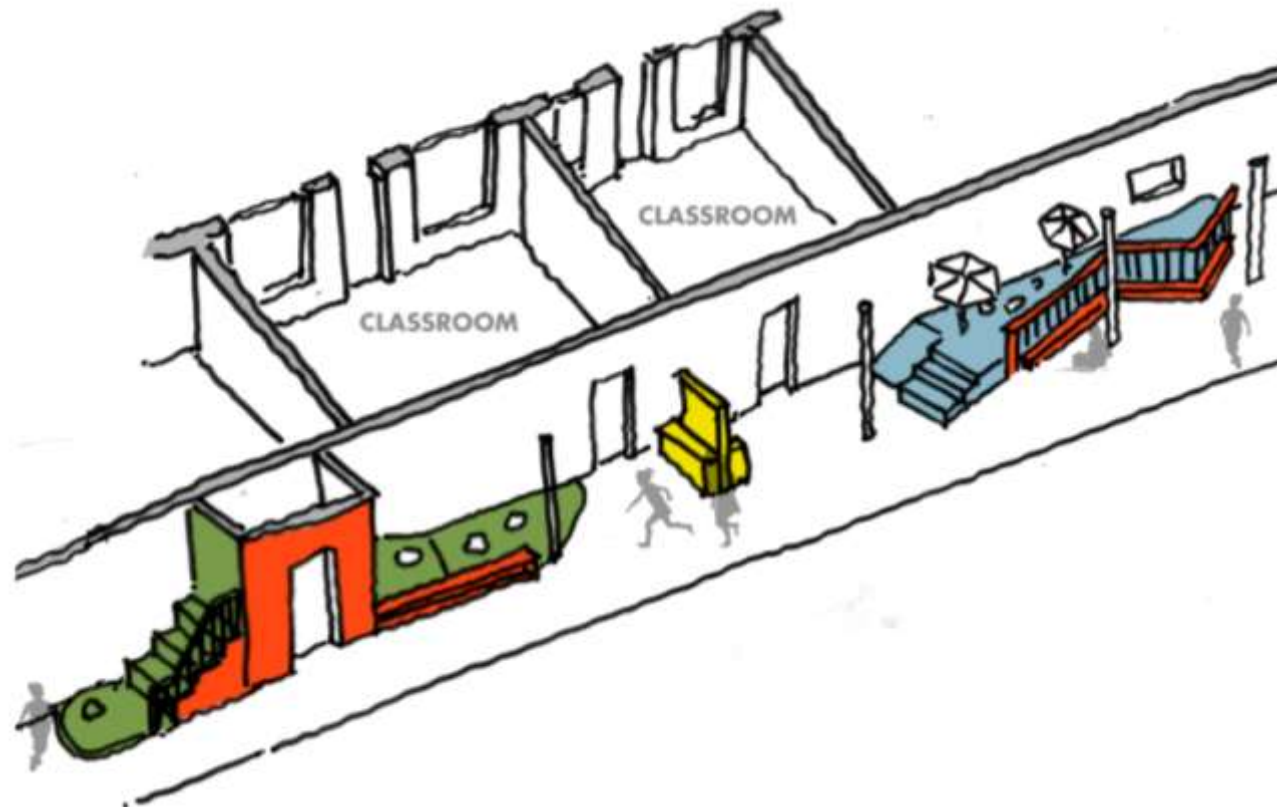


STRIDE TREGLOWN

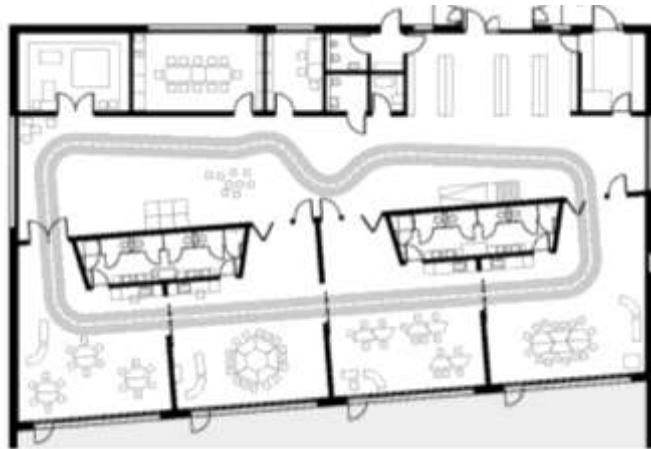
BOAT SPACE

BOAT SPACE

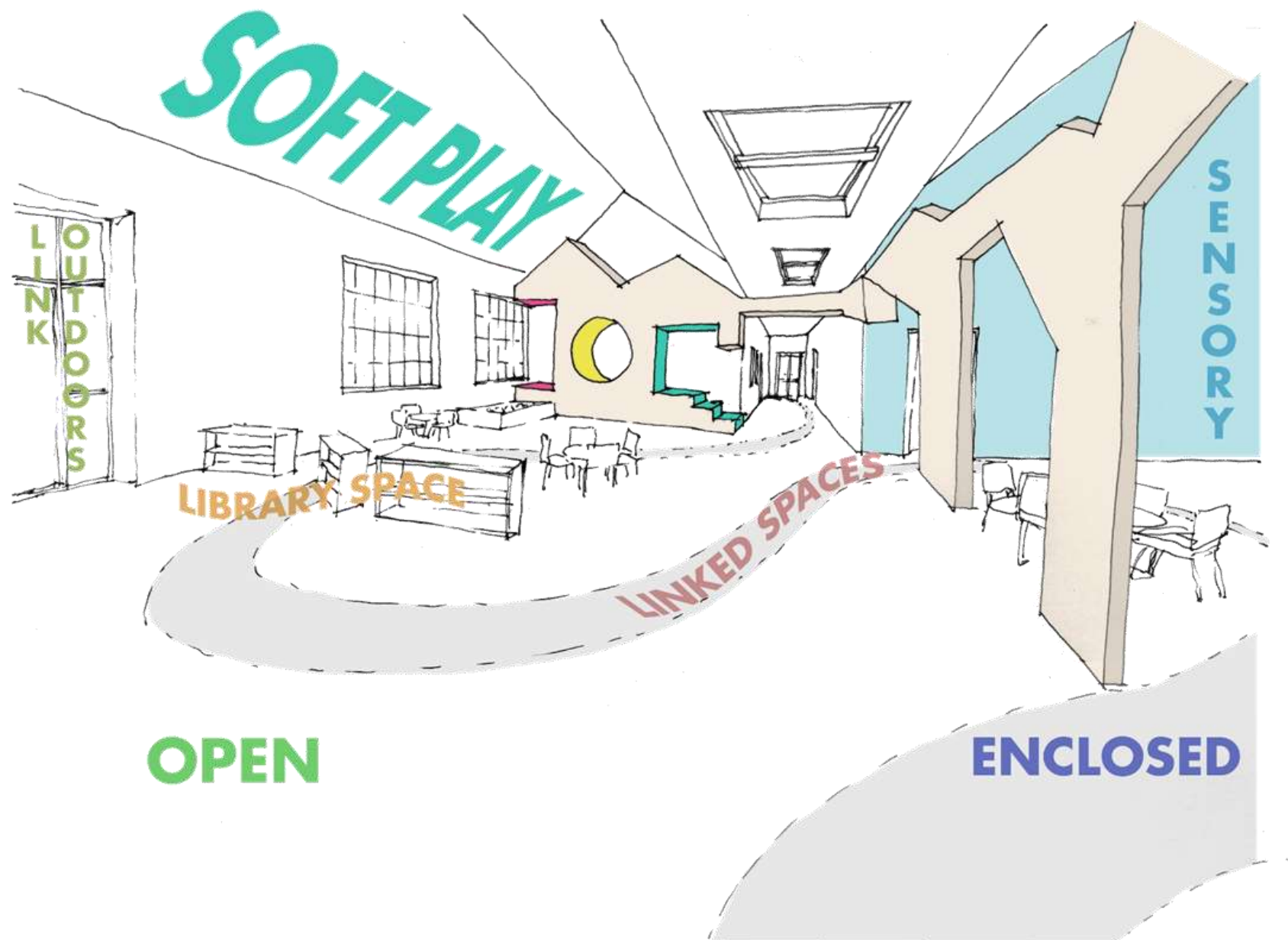
- Specialist food room / life skills
- Art Room
- Library
- Practical Room Storage – Food room
- Art Room Store
- Mobility Equipment Store
- Total area -112m²



BOAT SPACE



BOAT SPACE



LINK TO OUTSIDE



STRIDE TREGLOWN

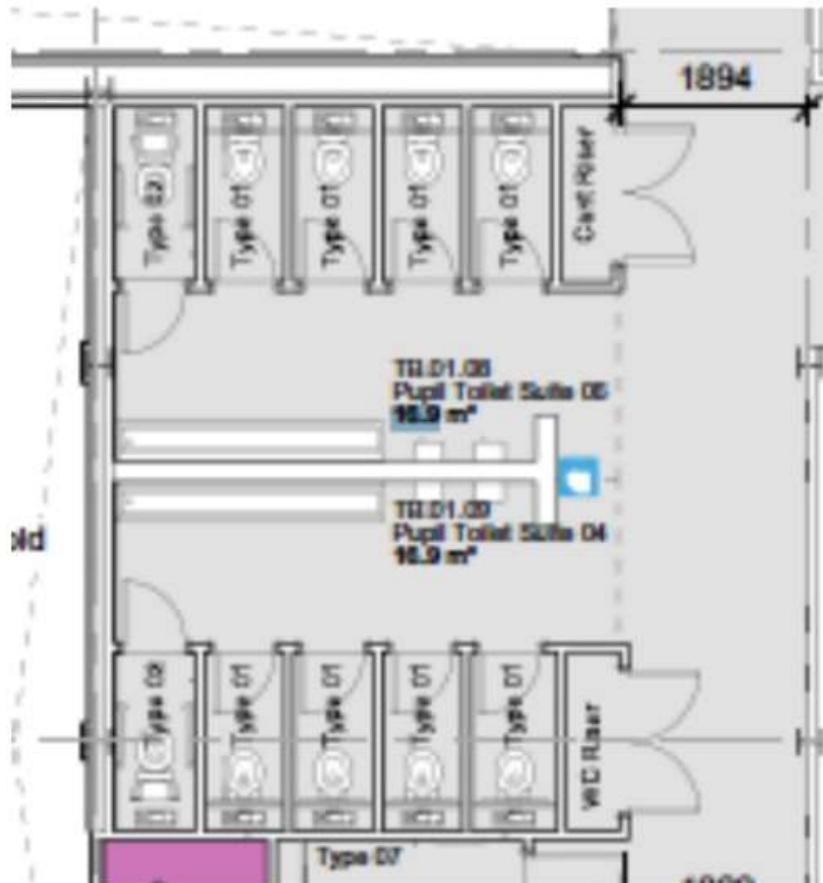
EARLY YEARS



STRIDE TREGLOWN

TOILETS

LOW CUBICLES DOORS



STRIDE TREGLOWN

SCHEDULE OF ACCOMMODATION

Proposed Areas

	General teaching		374	16	Within zone	
	Large Spaces		195	21	Within - due to existing hall	
	Learning Resource		215	34	Over	
	Staff & Admin		238	10	Over	
	Storage		138	-32	Within zone range	
	Non-net		529	14	Over	
			1689	63		
	Supplementary area		104	0		
* ¹ not based on BB104 subtotal formulas			STL Proposed	Difference		
* ² not based on BB104 subtotal formulas			TOTALS			

stridetreglown.com

twitter.com/StrideTreglown

linkedin.com/company/stride-treglown

instagram.com/stridetreglown